



# Speedfit Twist and Lock Range

10mm, 15mm, 22mm, 28mm  
Non-Watermarked Pipe and Fittings

**RWC**



 1800 810 803

 [sales.au@rwc.com](mailto:sales.au@rwc.com)

 [johnguest.com](http://johnguest.com)



Reliance Worldwide Corporation (Aust.) Pty. Ltd.  
27-28 Chapman Place, Eagle Farm QLD 4009,  
Australia | ABN 71 004 784 301

## Terms, Conditions and Warranty

Terms and Conditions	1
Reliance Worldwide Corporation Warranty	1

## Introduction

About John Guest	2
Quality Manufacture	2
Non-Watermarked Product Tested to AS/NZS 4020	3
International Standards	3

## Speedfit Twist and Lock Range

Technical Specifications	4
Equal Straight Connectors	6
Reducing Straight Connectors	6
Reducers	6
Equal Elbows	6
Equal Tees	6
Reducing Tees	7
Stem Elbows	7
Stem Tees	7
Bent Tap Connectors	7
Straight Tap Connectors	7
Female Tap Connectors	7
Stop Ends	8
Brass Male Adaptors BSP	8
Brass Male Adaptors BSPT	8
Male Stem Adaptors	8
Female Stem Adaptors	8
Back Plated Elbows	8
Stop Valves	8
Superseal Pipe Inserts	9
White BPEX Pipe – Coils	9
White BPEX Pipe – Straight Lengths	9
Pipe Clips and Spacers	9
Collet Locking Clips	9

## Terms and Conditions

No party should rely upon the contents of this publication as to the fitness of any particular product for any particular use or application. Goods are offered with the benefit of the manufacturers Warranty. Reliance Worldwide Corporation (AUST.) Pty Ltd. shall not be liable for any loss or damage either direct or consequential arising from any defect.

RWC reserves the right to modify designs and specifications and to withdraw and introduce products at any time without notice.

No part of this publication may be reproduced, copied or transmitted in any form by any means graphic, electronic or mechanical (including photo-copying, recording, taping or by any information storage and retrieval system) without prior permission in writing of the publisher Reliance Worldwide Corporation (Aust.) Pty. Ltd.

## Reliance Worldwide Corporation Warranty

Reliance Worldwide Corporation (Aust.) Pty. Ltd. (RWC) will either replace or repair any defective goods where the defect arose as a result of manufacture for up to twenty-five (25) years for WaterMarked products, and one (1) year for non-WaterMarked products (see [www.rmc.com.au/warranty](http://www.rmc.com.au/warranty) for more details). You may contact RWC at the phone number, address or e-mail shown below and will be required to return the goods for evaluation. Should the defect be found to be one of our manufacture we will send you a replacement product to your stated address at our expense. Our goods come with guarantees that cannot be excluded under Australian Consumer Law. You are entitled to a replacement or refund for a major failure and for compensation for any other reasonably foreseeable loss or damage. You are also entitled to have the goods repaired or replaced if the goods fail to be of acceptable quality and failure does not amount to a major failure.

® = Registered Trade Mark of  
Reliance Worldwide Corporation (Aust.) Pty. Ltd.  
27-28 Chapman Place, Eagle Farm QLD 4009, Australia  
1800 810 803 | [sales.au@rwc.com](mailto:sales.au@rwc.com)

© 2023 All rights reserved

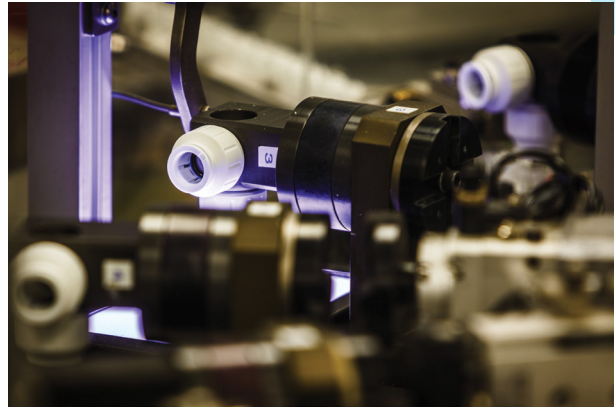
## About John Guest

When Mr. John Guest first opened his factory doors in the UK in 1961, he was determined to run a company where quality of product and excellence of service underpinned its ethos.

A strong spirit of innovation was encouraged from the outset, which led to the development and invention of the first Speedfit push-to-connect fittings in the 1970's by John Guest himself.

Today, John Guest has a long established reputation as a world leading manufacturer of push-to-connect fittings, tubing and other fluid control products. A reputation built on producing consistently high quality products with an ongoing commitment to value engineering and product development.

The world's first food-quality push-to-connect fitting, the John Guest range is now over 800 items strong and provides the quickest and most effective of installations. Pushing the tube into the fitting is all that is needed to produce an instant but permanent leakproof connection.



## Quality Manufacture

**A commitment to quality is at the heart of the John Guest philosophy.**

The strictest control is maintained by virtue of the fact that design and manufacture is carried out in modern purpose built manufacturing centres in West London and at Maidenhead in Berkshire.

Maintaining control over the whole process from initial tool design and tool making, through to final assembly and testing, ensuring that only products of the highest quality are produced.

The company believe it is this commitment to quality that has led to it receiving prestigious awards from many of the world's leading testing and approvals organisations.

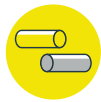
John Guest is a preferred supplier to many international companies.



**Fast Installation Time  
'Right First Time Every Time'**



**Quick Disconnection**



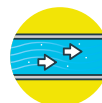
**Suitable For Soft  
Metal or Plastic Tubes**



**Re-Usable**



**No Tools Needed**



**Superior Flow Characteristics**





## Non-Watermarked Product Tested to AS/NZS 4020

All John Guest potable water products are certified to AS/NZS 4020 for use in contact with potable water. Products that have not been certified to Australian standards through the WaterMark scheme are not suitable for installation within a plumbing system covered as AS/NZS 3500. All John Guest products that do not have a WaterMark approval are to be used in a serviceable location and must not be used in behind-the-wall applications.

The only exception to this is where a John Guest product is utilised as a sub-component in another manufacturer's product that carries an appropriate WaterMark certification.

All John Guest products should be installed as per the installation instructions and within the prescribed operation conditions as detailed in the appropriate technical manual section. Failure to ensure proper installation methods and operating conditions may result in a shortened operating life and or voiding of the product warranty.

Installations may be subject to the requirements of the applicable regulatory authority, the National Construction Code Volume Three – Plumbing Code of Australia, associated reference standards as applicable at the time and AS/NZS 3500.

## International Standards

Accepted by almost all the world's beer and beverage producers and by the manufacturers of drinks dispense equipment, John Guest products have quality and performance approvals from leading testing and acceptance authorities.

Speedfit products are designed and manufactured under a fully integrated system assessed by B.S.I to BS EN ISO9001. They are approved by IAPMO Oceana for hot and cold water use (ISO15875/21003).



## Speedfit Twist and Lock Technical Specifications

Fittings and pipe should be kept clean and undamaged before use.

### Sizes

10mm, 15mm, 22mm and 28mm outside diameter (OD) pipe.

### High Temperatures

In case of malfunction, the Speedfit Twist and Lock system can withstand 100°C intermittently for short periods. The Speedfit Twist and Lock system should not be used on an uncontrolled heat source.

### Minimum Bend Radii (BPEX)

Pipe OD	Minimum Radius	Minimum Radius With Cold Forming Bend
10mm	100mm	30mm
15mm	175mm	75mm
22mm	225mm	110mm
28mm	300mm	

### Clip Spacing

For surface mounted pipes. Where pipe is concealed, clipping may only be required where necessary.

Pipe OD	Clip Spacing	
	Horizontal Run	Vertical Run
10 – 15mm	300mm	500mm
22mm	500mm	800mm
28mm	800mm	1000mm

### Expansion (PEX pipe)

1% on length between 20°C and 82°C.

### Pipe Clips

Pipe clips should not be fitted any closer than 60mm from the end of the fitting. Pipe should be adequately supported by pipe clips to prevent undue stress (side load) on fittings.

### Pipe Inserts

Pipe inserts must be used on all installations when using plastic pipe and should be fully inserted. Only use a Speedfit insert with Speedfit pipe.

### Paint and Chemicals

Before using Speedfit fittings and pipe with chemicals or other potentially aggressive liquids, please contact our Customer Service Department.

Use only water or oil based paint. **Do not allow contact with** jointing compounds, cellulose based paints, paint thinners or strippers, solder flux, acid based descalents, or aggressive cleaning products, including those below pH4, high in hypochlorite (e.g. bleach), or containing hydrogen peroxide.

### UV Resistance

Speedfit products should **not** be installed in direct or reflected sunlight as the material may degrade with extended UV exposure.

### Brazing Flux

No fluxes of any type should come into contact with Speedfit fittings or pipe.

### Copper Capillary Adaptors

Braze a Speedfit copper capillary adaptor to the copper pipe and allow capillary joint to cool completely, making sure that the Speedfit stem end is free of any flux, or other contaminant, before inserting any Speedfit fittings.

## Chlorine

Speedfit Twist and Lock is not suitable for use in systems where the water contains high levels of chlorine (e.g. swimming pools and fountains).

## Metal Joists

When 'cabling' plastic pipe through metal joists, ensure rubber grommets are in place to prevent damage to pipe. Use of collet clips on standard fittings is recommended.

## Connection to Water Heaters

Not to be used beyond the inlet stop valve, and within 1 metre of the outlet of the water heater.

## Connection to Copper Pipe

450mm is the minimum distance to make a brazed connection on copper pipe where brazing tails are inserted into Speedfit connectors. Ensure that any residual flux does not come into contact with the fitting.

## Concrete and Masonry

Speedfit pipe and fittings can be laid in concrete and masonry, providing they are installed in conduit pipe with access boxes for the fittings. This is to enable the pipe to expand and provide accessibility for both pipe and fittings. Fittings and pipe should be removable for possible replacement. Insulation is also recommended to protect against heat loss and the effects of frost.

## Electrical Continuity

If Speedfit is used in an existing metal system which may have been used for earthing, electrical continuity should be reinstated.

## Collet Clips

Collet Clips prevent accidental release of pipe from non-Twist and Lock fittings, i.e. stop ends and brass fittings. Red and blue clips can also be used to provide colour coding of pipe on both Twist and Lock, and other Speedfit fittings.

## Re-Circulating Ring Main Systems

Speedfit products must not be used on any re-circulating ring main systems, as they are not approved under the current standards.

## System Testing

To ensure the pipe work and fittings have been installed correctly, whether it be on a new or extended system, it is essential that the system is checked, and hydraulically wet tested. Testing should be at 200kPa for 10 minutes.

## System Flushing

As is usual practice for any plumbing installation, flushing of the system prior to the use of Speedfit is recommended to remove any contaminants/chemical residue from elsewhere in the system.

## Vermin

Speedfit products should not be used in vermin infested areas.

## Maximum Torque Figures

Plastic threads are not generally as strong as brass threads. Customers and end users should be aware of this when choosing products for their applications. Over tightening of plastic threads will cause undue stress and eventual cracking and leakage. The maximum torque figures for BSP, and BSPT threads, used on Speedfit plumbing products, in mating threads, conforming to the relevant British or International thread standards, are as follows:

Threads	Size	Maximum Torque
Brass	1/2"	4.0 Nm
Brass	3/4"	5.0 Nm

It is recommended that all installations are checked prior to use to determine that seal has been made.



## Speedfit Twist and Lock Range

Speedfit Twist and Lock fittings have a unique grip-then-seal construction, made up of a collet with stainless steel teeth to grip the pipe, and an O-Ring to provide a permanent leak proof seal.

Temperature	Pressure	Temperature	Pressure
AIR/VACUUM	10mm - 28mm	DO NOT FREEZE	
	Not Suitable	+20°C	1200kPa
		+95°C	600kPa



### Equal Straight Connectors

Order Code	Size
PEM0410W	10mm
PEM0415W	15mm
PEM0422W	22mm
PEM0428W	28mm



### Reducing Straight Connectors

Order Code	Size
PEM201510W	15mm x 10mm
PEM202215W	22mm x 15mm



### Reducers

Order Code	Size
PEM061510W	15mm Stem x 10mm Tube
PEM062215W	22mm Stem x 15mm Tube
PEM062815W	28mm Stem x 15mm Tube
PEM062822W	28mm Stem x 22mm Tube



### Equal Elbows

Order Code	Size
PEM0310W	10mm
PEM0315W	15mm
PEM0322W	22mm
PEM0328W	28mm



### Equal Tees

Order Code	Size
PEM0210W	10mm
PEM0215W	15mm
PEM0222W	22mm
PEM0228W	28mm



## Reducing Tees

Order Code	Size
PEM302210AW	22mm x 22mm x 10mm
PEM3022AW	22mm x 22mm x 15mm
PEM3022BW	22mm x 15mm x 15mm
PEM3022CW	15mm x 15mm x 22mm
PEM3022DW	22mm x 15mm x 22mm
PEM3028AW	28mm x 28mm x 22mm
PEM3028BW	28mm x 22mm x 22mm
PEM3028DW	28mm x 22mm x 28mm



## Stem Elbows

Order Code	Size
PEM221010W	10mm
PEM221515W	15mm
PEM222222W	22mm

Provides a swivel type connection.



## Stem Tees

Order Code	Size
PEM532210W	22mm x 22mm x 10mm
PEM532215W	22mm x 22mm x 15mm



## Bent Tap Connectors

Order Code	Size
PEMBTC1514	15mm x 1/2" BSP Bent Tap Connector



## Straight Tap Connectors

Order Code	Size
PEMSTC2216	22mm x 3/4" BSP Straight Tap Connector



## Female Tap Connectors

Order Code	Size
PSE3201W	15mm x 1/2"
PSE3203W	15mm x 3/4"
PSE3202W	22mm x 3/4"



## Stop Ends

Order Code	Size
PSE4615W	15mm
PSE4622W	22mm

For a permanent or temporary shut off.



## Brass Male Adaptors BSP

Order Code	Size
15MC(1/2)	15mm x 1/2" BSP Male
22MC(3/4)	22mm x 3/4" BSP Male



## Brass Male Adaptors BSPT

Order Code	Size
MW011504N	15mm x 1/2" BSPT Male
MW012206N	22mm x 3/4" BSPT Male
MW012808N	28mm x 1" BSPT Male



## Male Stem Adaptors

Order Code	Size
MW051504N	15mm Stem x 1/2" BSPT Male
MW052206N	22mm Stem x 3/4" BSPT Male
MW052818N	28mm Stem x 1" BSP Male



## Female Stem Adaptors

Order Code	Size
MW501514N	15mm Stem x 1/2" BSP Female
MW502216N	22mm Stem x 3/4" BSP Female



## Back Plated Elbows

Order Code	Size
15WB	15mm x 1/2" Female BSP
22WB	22mm x 3/4" Female BSP



## Stop Valves

Order Code	Size
15STV/2	15mm

Hot and cold water only, 65°C maximum.



## Superseal Pipe Inserts

Order Code	Size
STS10	10mm
STS15	15mm
STS22	22mm
STS28	28mm



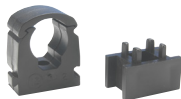
## White BPEX Pipe – Coils

Order Code	Size
10BPEX-100C	10mm x 100m Coil
15BPEX-25C	15mm x 25m Coil
15BPEX-50C	15mm x 50m Coil
15BPEX-100C	15mm x 100m Coil
15BPEX-120C	15mm x 120m Coil
15BPEX-150C	15mm x 150m Coil
22BPEX-25C	22mm x 25m Coil
22BPEX-50C	22mm x 50m Coil



## White BPEX Pipe – Straight Lengths

Order Code	Size
15BPEX-20X3L	15mm x 3m length
22BPEX-20X2L	22mm x 2m length
28BPEX-10X3L	28mm x 3m length



## Pipe Clips and Spacers

Order Code	
PC15W	15mm Pipe Clip
PC22W	22mm Pipe Clip
PC28W	28mm Pipe Clip
PCSW	Pipe Spacer




## Collet Locking Clips

Order Code	Colour
CM1815B	15mm Blue Locking Clip
CM1815S	15mm Grey Locking Clip
CM1822B	22mm Blue Locking Clip
CM1822R	22mm Red Locking Clip
CM1822W	22mm White Locking Clip

Collet Clips prevent accidental release of pipe from non-Twist and Lock fittings ie. Stop Ends and brass fittings. Red and blue clips can also be used to provide colour coding of pipe on both Twist and Lock and non-Twist and Lock fittings.



 1800 810 803

 [sales.au@rwc.com](mailto:sales.au@rwc.com)

 [johnguest.com](http://johnguest.com)

**AN RWC BRAND**  
**RWC** Reliance Worldwide Corporation (Aust.) Pty. Ltd.  
27-28 Chapman Place, Eagle Farm QLD 4009,  
Australia | ABN 71 004 784 301

AU-JG-PG0213-0424-R5

The RWC logo, consisting of the letters 'RWC' in a bold, black, sans-serif font, positioned on a yellow and white geometric background.